



FRIENDS OF SOUTH FLORIDA AUTISM
RAY OF HOPE GALA

Enchanted **PALACE**

NOVEMBER

11

AT 6:30 PM

Alfred I Dupont Building

*169 E Flagler St.
Miami FL 33131*

Enchanted PALACE

Dear Friends,

We are excited to share the news of our 15th annual Ray of Hope Gala, "Enchanted Palace" taking place on November 11th at 6:30 pm at the historic Alfred I DuPont building. The night will feature an exciting silent auction/raffle showcasing one-of-a-kind items, student performances showing off their various talents, a cocktail hour, dinner, dancing, live music and an engaging program! Friends of South Florida Autism hosts this fundraiser to support South Florida Autism Charter Schools, Inc., South Florida Autism Center, Inc., and The Villages of South Florida Autism, Inc.; organizations that provide services to individuals who are most severely affected by Autism. Your support will allow us to continue to fulfill our mission, extend our reach and expand our programs. Sponsorships from organizations like yours will go a long way in making our Ray of Hope Gala night a success. As a sponsor, you or your company, will be promoted on all our social media campaigns, event pages and our program. Your support and commitment to our cause will make a tangible difference and make a lasting impact on the autism community. We thank you in advance and look forward to sharing this special evening. Our mission could not be accomplished without our sponsors and donors. Your support on this night will further allow us to continue providing vital services to even more families and assist in the construction of our new community outreach facility, which will not only provide wrap-around services to the entire South Florida region, but also serve as a replicable model for Autism intervention. Information regarding sponsorship opportunities is available at www.friendsofsfa.org or by calling (305) 823-2700 ext. 2003. On behalf of our Governing Board, staff, and families, we thank you for your loyalty and generosity. We look forward to celebrating with you and again thank you for being part of our community, without you none of this would be possible. Sincerely,

Tamara Moodie

Dr. Tamara Moodie

Executive Director

CONTACT US: info@friendsofsfa.org | (305) 823-2700 ext. 2001

THANK YOU FOR YOUR GENEROSITY FRIENDS OF SOUTH FLORIDA AUTISM INC. IS A NON-PROFIT ORGANIZATION (EIN # 47-3240630), AND IS RECOGNIZED BY THE INTERNAL REVENUE SERVICE AS EXEMPT FROM FEDERAL TAX UNDER SECTION 501(C)3 OF THE U.S. TAX CODE

Enchanted PALACE

SUPPORT OPPORTUNITIES

INDIVIDUAL TICKETS \$250.

(\$100 of each ticket is tax-deductible)

PROGRAM JOURNAL ADVERTISING (PRINT)

Artwork must be submitted in JPEG or PDF format.

Premium Page (8.5"W x 11"H) \$1,000

Full Page (8.5"W x 11"H) \$750

Half Page (8.5"W x 5.5"H) \$550

Quarter Page (4.25"W x 5.5"H) \$250

UNDERWRITERS \$1,000 AND UP

Individuals who wish to support the Ray of Hope Gala, may choose to Underwrite expenses for the event. See enclosed RSVP card for options.

CORPORATE SPONSORSHIP \$20,000 (your donation, less \$1,500, is tax-deductible)

Table of 10 with Premium seating, featured on Home page Friends of website for the duration of Gala, Sole light effects with company name at event, VIP Private reception, Featured signage at event entrance, Premium Page on Journal, Award presentation at event, Listing as Corporate Sponsor on invitation and promotional materials and acknowledgement on all Social Media Platforms.

ENCHANTED SPONSORSHIP \$10,000 (your donation, less \$1,500, is tax-deductible)

Premium table for 10 guests; Premium Page recognition in Event Program Journal, award presentation at event; Listing as Enchanted Sponsor on invitation, event signage, promotional materials, and event website. Prominent signage display at event. Acknowledgement on all Social Media Platforms.

CHARMED SPONSORSHIP \$5,000 (your donation, less \$1,500, is tax-deductible)

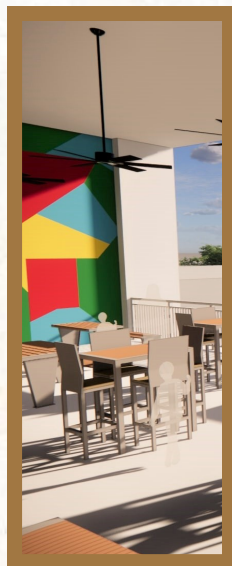
Table for 10 guests; Full Page recognition in Event Program Journal award presentation at event; Listing as Charmed Sponsor on invitation, event signage, promotional materials, and event website. Acknowledgement on all Social Media Platforms.

MAGICAL SPONSORSHIP \$3,500 (your donation, less \$1,500, is tax-deductible)

Table for 6 guests; Half-page recognition in Event Program Journal, award presentation at event; Listing as Magical Sponsor on invitation, event signage, promotional materials, and event website. Acknowledgement on all Social Media Platforms.

WONDROUS SPONSORSHIP \$2,000 (your donation, less \$600 is tax-deductible)

Reserved seating for 4 guests; Quarter-page recognition in Event Program Journal, award presentation at event; Listing as Wondrous Sponsor on invitation, event signage, promotional materials, and event website.



Enchanted PALACE

PROGRAM JOURNAL OPPORTUNITIES

PREMIUM PAGE (8.5"W X 11"H) \$1,000
FULL PAGE (8.5"W X 11"H) \$750
HALF PAGE (8.5"W X 5.5"H) \$550
QUARTER PAGE (4.25"W X 5.5"H) \$250

PLEASE INCLUDE YOUR MESSAGE BELOW.

Deadline to submit form is to October 13th, 2023.

Artwork must be submitted in JPEG or PDF format to info@friendsofsfa.org.



THIS AD IS BEING PLACED BY: _____

CONTACT PERSON: _____

MAILING ADDRESS: _____

City _____ **State** _____ **Zip Code** _____

TELEPHONE:

Primary: _____ **Fax** _____ **Cell** _____

EMAIL ADDRESS: _____

DONOR'S SIGNATURE: _____

PAYMENT OPTIONS:

Check enclosed (Please make checks payable to: Friends of South Florida Autism, Inc)

Charge my donation to: **Visa** **Mastercard** **Amex**

Name on card: _____

Acct No: _____

Sec. Code: _____

Expiration: _____

Signature: _____

COMPLETE FORM & MAIL TO: 3751 W 108TH ST, HIALEAH, FL 33018

THANK YOU FOR YOUR GENEROSITY FRIENDS OF SOUTH FLORIDA AUTISM INC. IS A NON-PROFIT ORGANIZATION (EIN # 47-3240630), AND IS RECOGNIZED BY THE INTERNAL REVENUE SERVICE AS EXEMPT FROM FEDERAL TAX UNDER SECTION 501(C)3 OF THE U.S. TAX CODE.

Enchanted PALACE

SPONSORSHIP

PLEASE COMPLETE AND SUBMIT FORM TO ATTN:
Friends of South Florida Autism, Inc. 3751 W 108th St, Hialeah, FL 33018
CONTACT US: info@friendsofsfa.org or Phone: (305) 823-2700 ext. 2001

SPONSOR/UNDERWRITER NAME:

(as you would like the sponsorship to appear on printed materials)

Contact Person: _____

Company Affiliation: _____

Mailing Address: _____

Email: _____

Phone: _____

SPONSORSHIP LEVEL:

Corporate Sponsor \$20,000

Enchanted Sponsor \$10,000

Charmed Sponsor \$5,000

Magical Sponsor \$3,500

Wondrous Sponsor \$2,000

UNDERWRITING OPTIONS:

Underwriters will be recognized in our donor and silent auction page, event home page and additional programming

Catering: \$20,000

Auction/Bidding Service \$4,000

Printing & Postage \$3,000

AV/Technical \$2,500

Light & Sound \$2,000

Décor \$2,000

General Expenses \$1,000

PAYMENT OPTIONS:

Check enclosed (Please make checks payable to: Friends of South Florida Autism, Inc)

Charge my donation to: Visa Mastercard Amex

Name on card: _____

Acct No: _____

Sec. Code: _____

Expiration: _____

Signature: _____

Enchanted PALACE

DONATE NOW

SUPPORT FRIENDS OF SOUTH FLORIDA AUTISM

PLEASE COMPLETE AND SUBMIT FORM TO ATTN:

Friends of South Florida Autism, Inc. 3751 W 108th St, Hialeah, FL 33018

CONTACT US: info@friendsofsfa.org or Phone: (305) 823-2700 ext. 2001

Purchaser Name: _____

Contact Person: _____

Company Affiliation: _____

Mailing Address: _____

Email: _____

Phone: _____

Your contribution is needed more than ever to help us foster a lifetime love of learning for every student we serve.

HOW WOULD YOU LIKE TO DONATE?

One-Time

Monthly

PAYMENT OPTIONS:

Check enclosed (Please make checks payable to: Friends of South Florida Autism, Inc)

Charge my donation to: Visa Mastercard Amex

Name on card: _____

Acct No: _____

Sec. Code: _____

Expiration: _____

Signature: _____

FRIENDS OF SOUTH FLORIDA AUTISM, INC. IS A NON-PROFIT ORGANIZATION (EIN #47-3240630), AND IS RECOGNIZED BY THE INTERNAL REVENUE SERVICE AS EXEMPT FROM FEDERAL TAX UNDER SECTION 501(C)(3) OF THE U.S. TAX CODE. WE ARE REGISTERED WITH THE FLORIDA DEPARTMENT OF AGRICULTURE & CONSUMER SERVICES (REGISTRATION #CH47736). A COPY OF THE OFFICIAL REGISTRATION AND FINANCIAL INFORMATION MAY BE OBTAINED FROM THE DIVISION OF CONSUMER SERVICES BY CALLING TOLL-FREE WITHIN THE STATE. REGISTRATION DOES NOT IMPLY ENDORSEMENT, APPROVAL, OR RECOMMENDATION BY THE STATE. 1-800-HELP-FLA, WWW.FLORIDAConsumerHELP.COM.

Enchanted PALACE

SILENT AUCTION DONATION

PLEASE COMPLETE AND SUBMIT FORM TO ATTN:
Friends of South Florida Autism, Inc. 3751 W 108th St, Hialeah, FL 33018
CONTACT US: info@friendsofsfa.org or Phone: (305) 823-2700 ext. 2001

We wish to donate the following (items) to Friends of South Florida Autism, Inc. for the Ray of Hope Gala on Nov. 11, 2023. We realize that items valued at less than \$100 will be grouped.

Deadline to submit form is October 13, 2023.

Donor Name: _____

Contact Person: _____

Company Affiliation: _____

Mailing Address: _____

Email: _____

Phone: _____

Item (s) _____

Description
(Please include all identifying information including model number, etc.)

Retail Price _____ **Method of Delivery** _____

Event proceeds benefit educational and therapeutic programs at South Florida Autism Center, South Florida Autism Charter Schools, and The Villages of South Florida Autism.

Enchanted PALACE

WHO WE ARE



SOUTH FLORIDA AUTISM CENTER is committed to serving the entire demographic of individuals diagnosed with autism spectrum disorders (ASD) residing in South Florida with opportunities that address all their needs on one campus offering early intervention, educational, community outreach, respite, recreational, and vocational services. Programs are implemented utilizing science based methodologies that can be replicated and serve as a model for autism intervention programs.



SOUTH FLORIDA AUTISM CHARTER SCHOOL provides education and therapeutic services to students diagnosed with ASD residing in Miami-Dade and Broward Counties, targeting students with communication deficits and/or behavioral challenges, and who may require training in self-help skills. The methodologies of B.F. Skinner's Theory of Applied Behavioral Analysis (ABA) and Verbal Behavior (VB) are applied in conjunction with State Standards for students on a modified curriculum in order to provide the most effective individualized educational programs possible.



THE VILLAGES OF SOUTH FLORIDA AUTISM believes that individuals diagnosed with autism spectrum disorders (ASD) should have the opportunity to develop to their fullest potential and to live as independently and productively as possible. We are devoted to creating safe and appropriate housing for this population in an environment that is socially and emotionally fulfilling, utilizing science-based methodologies.



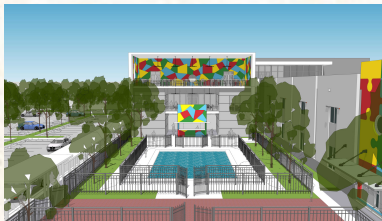
FRIENDS OF SOUTH FLORIDA AUTISM provides support to South Florida Autism Center, South Florida Autism Charter Schools, and The Villages of South Florida Autism so that they may fulfill their missions of assisting individuals diagnosed with autism spectrum disorder (ASD) who reside in South Florida.

OUR FUTURE

COMMUNITY OUTREACH BUILDING (CENTER)

- Daycare-Early Intervention Programming
- Out-of-school services including Summer, Spring and Winter camps. Afterschool programming and Saturday Respite Program
- State-of-the art Fitness Center for individuals diagnosed with Autism and their families
- Adult Respite programming including behavioral crisis intervention as well as training in independent living skills

OUR STATE-OF-THE-ART CAMPUS WILL SERVE AS A REPLICABLE MODEL FOR AUTISM INTERVENTION





FRIENDS OF SOUTH FLORIDA AUTISM

Ray of Hope

GALA

Thank you for your support

CONTACT US: info@friendsofsfa.org | (305) 823-2700 ext. 2001

THANK YOU FOR YOUR GENEROSITY FRIENDS OF SOUTH FLORIDA AUTISM INC. IS A NON-PROFIT ORGANIZATION (EIN # 47-3240630), AND IS RECOGNIZED BY THE INTERNAL REVENUE SERVICE AS EXEMPT FROM FEDERAL TAX UNDER SECTION 501(C)(3) OF THE U.S. TAX CODE.